

## DIRECTIONS TO:

**THREE RIVERS COMMUNITY COLLEGE**  
574 New London Turnpike  
Norwich, CT 06360

### From New London:

Follow Route 32 to I-395. Take Exit 80\*\*  
(travel time approximately 15 minutes)

### From Groton/Mystic:

Follow I-95 south to Route 32 - Norwich. Take I-395 north to Exit 80\*\*  
(travel time approximately 25 minutes)

### From Colchester and points West:

Follow Route 2 east until it merges with Route 32 south. Take Exit 28S onto I-395 south to Exit 80. Take a left at the end of the Exit ramp (Route 82 Salem Turnpike).\*\*  
(travel time approximately 23 minutes)

### From Jewett City and points North:

Take I-395 south to Exit 80. Take a left at the end of the Exit ramp (Route 82 Salem Turnpike).\*\*  
(travel time approximately 20 minutes)

### From Ledyard/Navy Sub Base area:

Follow 2A (Mohegan Pequot Bridge) to I-395 north. Take Exit 80\*\*  
(travel time approximately 25 minutes)

### From New Haven and points south:

Take I-95 north to I-395 north (exit 76). Take I-395 north to Exit 80\*\*

### \*\* From all points above:

Travel approximately  $\frac{3}{4}$  miles to New London Turnpike. Turn right. The Campus is about .2 miles on left.



**Seating is Limited—Don't Delay !**

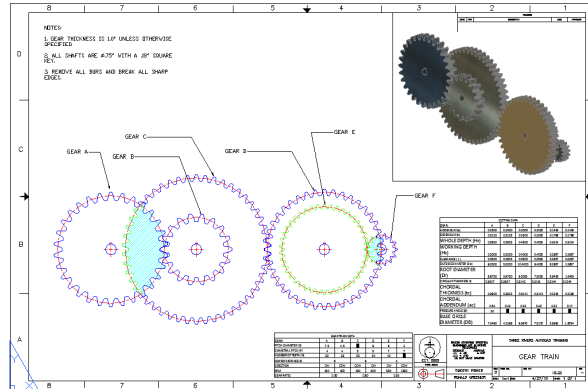
## Contact Us:

**Three Rivers Community College**  
**Workforce & Community Education**  
574 New London Tpke.  
Norwich, CT 06360

**Phone: 806-215-9028**  
**Fax: 860-215-9902**

**E-mail: [WCEinfo@threerivers.edu](mailto:WCEinfo@threerivers.edu)**

**Visit us on the web:**  
**[www.threeriver.edu](http://www.threeriver.edu)**



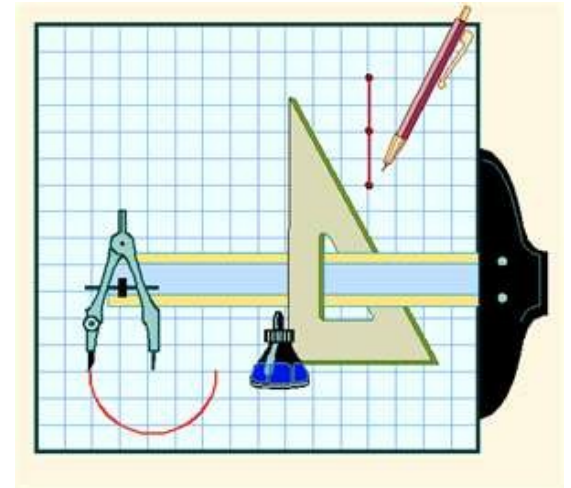
### REFUND POLICY

Refund policy: Withdrawal from any non-credit class must be submitted in writing to the Workforce & Community Education office up to one business day prior to the first class. **Absolutely no refunds will be issued after the first class has begun.** The college reserves the right to cancel any course for which there is insufficient enrollment. In that event, a full refund will be issued.

# Basic CAD – Autocad

**Looking to Refresh Your  
Skills—Join Us this Summer**

## Summer 2020



**Three Rivers Community College**  
**Workforce & Community Education**  
Phone: 860-215-9028 ~ Fax: 860-215-9902

Email: [WCEinfo@threerivers.edu](mailto:WCEinfo@threerivers.edu)  
Website: [www.threerivers.edu](http://www.threerivers.edu)

 **Three Rivers**  
COMMUNITY COLLEGE  
Norwich, Connecticut

